

External events 2017

Woolfest

Mitchell's Lakeland Livestock
Centre, Cockermouth, Cumbria,
Fri 23 June & Sat 24 June 2017

Association of Guilds of Weavers, Spinners and Dyers Summer School

Sparsholt College, Hampshire
SO21 2NF
Sun 13 – Sun 20 Aug 2017
<http://www.wsd.org.uk/news.php?id=57>

Campaign for Wool — Wool Week 2017

Mon 9 – Fri 13 October 2017

Knitting and Stitching Show, Harrogate

November 2017 (*dates to be confirmed*)

Guild Exhibition

“Chinese Whispers”

May 2017 at the World Heritage Site
Visitor Centre, Durham

Other local groups

Shipley Weavers

Second & fourth Wednesday at the
Shipley Art Gallery, Prince Consort Rd,
Gateshead NE8 4JB



Venues

Most day-time meetings and workshops are held at St Oswald's Institute, Church Street Durham, DH1 3DQ.

The peg-loom weaving workshop on 20 May will be held at **Broom House Farm**, Witton Gilbert, Durham DH7 6T
(see <http://www.broomhousedurham.co.uk/how-to-find-broom-house-farm>)

Contacts

Chairman

Angela Colbridge

Secretary (*for membership enquiries*)

Graham Butcher (tel. 01388 817404)

Treasurer

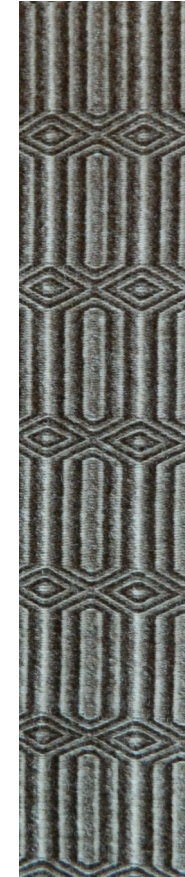
Linda Smith (barbaralindasmith@gmail.com)

WWW

<http://www.durhamguild.com/>

Charity no. 517947

Durham Guild of Spinners, Weavers and Dyers



Events Diary 2017

<http://www.durhamguild.com/>

Non-members Always Welcome !

DGSWD Events 2017

Non-members Always Welcome !

January

Saturday 21 January 10.00am – 4.00pm

Internet Day
Guild members

February

Saturday 18 February 10.00am – 4.00pm

AGM
Trips to Harris:
Guild members

March

Saturday 18 March 10.00am – 4.00pm

Open Day: Spinning

April

Saturday 15 April 10.00am – 4.00pm

Chinese Whispers Exhibition
Framing Day
and 2018 National Exhibition
preparation
Guild members

May

Saturday 20 May 10.00am – 4.00pm (at
Broom House Farm – see Venues,
overleaf)

Peg-loom Weaving
with Chrissie Morgan
(<http://www.fowlersyard.com/chrissie-morgan.html>)

June

Saturday 17 June 10.00am – 4.00pm

Indigo Dyeing workshop
with Cia Bosanquet
(<http://www.indigo-shibori.co.uk/>)

July

Saturday 15 July 10.00am – 4.00pm

Felted Vessels
with Angela Colbridge & Ann Evans

August

August 10am – 4pm (*date to be confirmed*)

The Summer Garden Party

September

Saturday 16 September 10.00am – 4.00pm

Open Weaving Day

October

Saturday 21 October 10.00am – 4.00pm

Needle-felting with Ann Sheppard
(<http://annsheppard.co.uk/>)

November

Saturday 18 November 10.00am – 4.00pm

Silk Spinning
with Carol and Pete Leonard
(<http://spindlers2.com/>)

December

Saturday 16 December 10.00am – 4.00pm

Christmas Party

Workshops

To book a place on a workshop, (May, June, October and November) please contact Linda Smith. A deposit of £10 will be required to secure your place.

Please note: members and visitors are encouraged to attend every meeting – it's not necessary to participate in the scheduled workshop.

Guild out-reach events

World Heritage Site Visitor Centre

Every other month, 4th Saturday,
10am – 4pm, (28 Jan, 25 Mar, 27 May, 22
July, 23 Sept, 25 Nov).

Beamish Open Air Museum

9 – 11 June 2017

RSPB Saltholme Shearing Event

15 – 16 July 2017

Wolsingham Show

Sun 3 September 2017

Beamish Open Air Museum Agricultural Show

14 – 17 September 2017

All meetings (except May 20th) held at St Oswald's Institute, Durham, DH1 3DQ